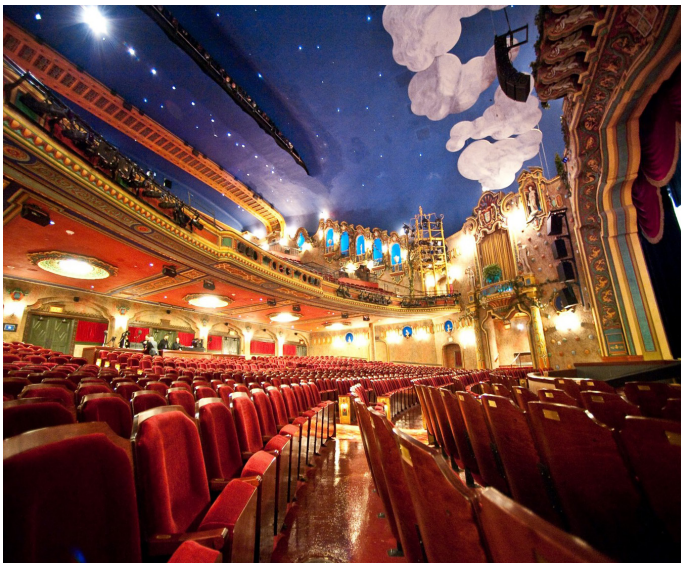
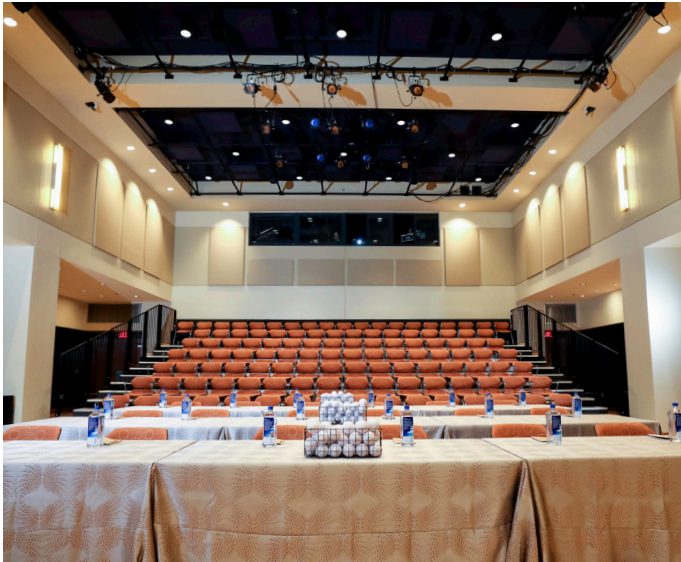




DOMINION ENERGY CENTER



Private Events at Dominion Energy Center

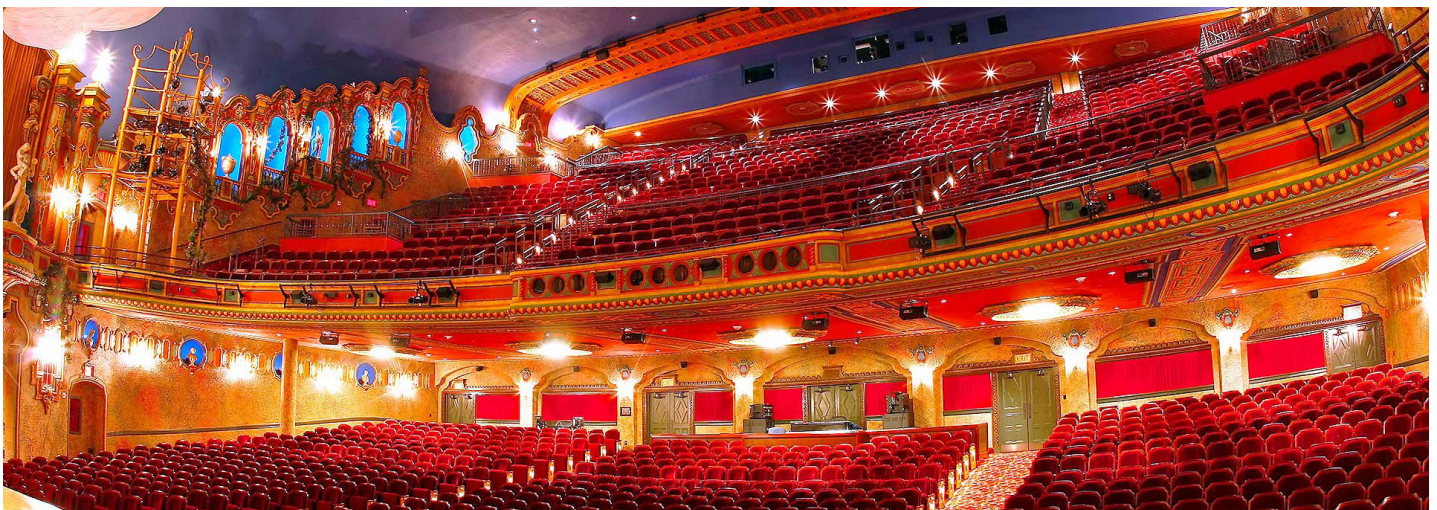


Versatile Spaces for All Occassions

Whether it's a corporate meeting, a dream wedding, or an intimate celebration before a performance, the Dominion Energy Center has a space that can accommodate any and all needs.

Take advantage of this historic venue's whimsical charm and more tha 20,000 square feet of event and meeting space, setting the perfect backdrop to 'wow' your guests.

Our team at Dominion Energy Center is here to provide first-class service and assistance in planning your next big event. Contact us today to inquire.





Carpenter Theatre

The Carpenter Theatre is a step back in time to the luxurious majesty and architecture of the 1920s, utilizing atmospheric design to transport your attendees under the night sky. The largest of event spaces at the Dominion Energy Center, Carpenter Theater is the main venue used for ticketed events, presentations, awards ceremonies, and private events hosted on the stage.

Our professional production team can accommodate your specific audio and visual needs.

Both spaces are located on the ground floor level, and are ADA accessible.

Both male and female restrooms are available on this floor, found in the lobby.

Carpenter Theatre Specs:

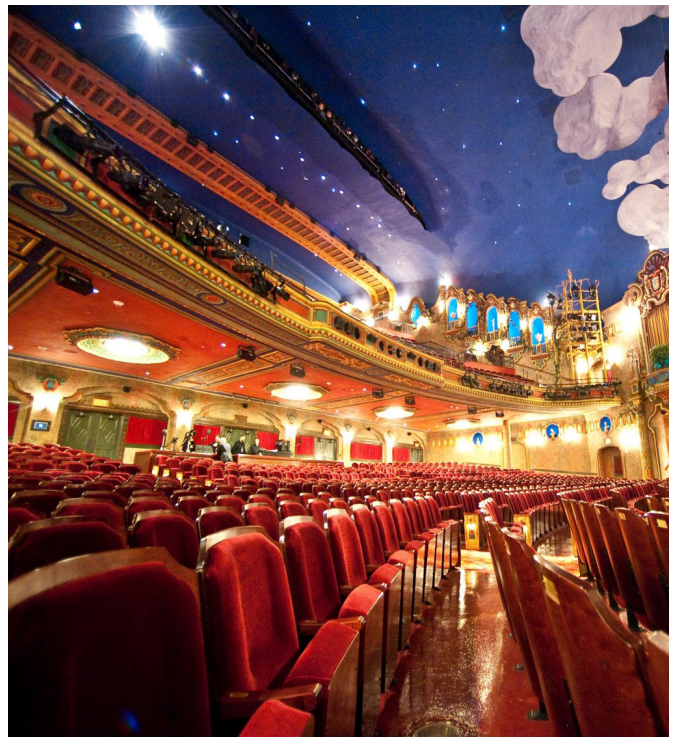
Dimensions: Available by request

Capacity: 1,800 seated guests

Carpenter Theatre Stage Specs:

Dimensions: 4,950 sqft

Capacity: 400 standing room, 250 seated guests







Gottwald Playhouse

The Libby S. Gottwald Playhouse is a flexible seated venue, boasting an intimate atmosphere that can accommodate various types of meetings, performances, and gatherings.

Despite the size of the room, the Gottwald Playhouse features hall-quality acoustics and state-of-the-art lighting to bolster every experience.

Our professional production team can accommodate your specific audio and visual needs.

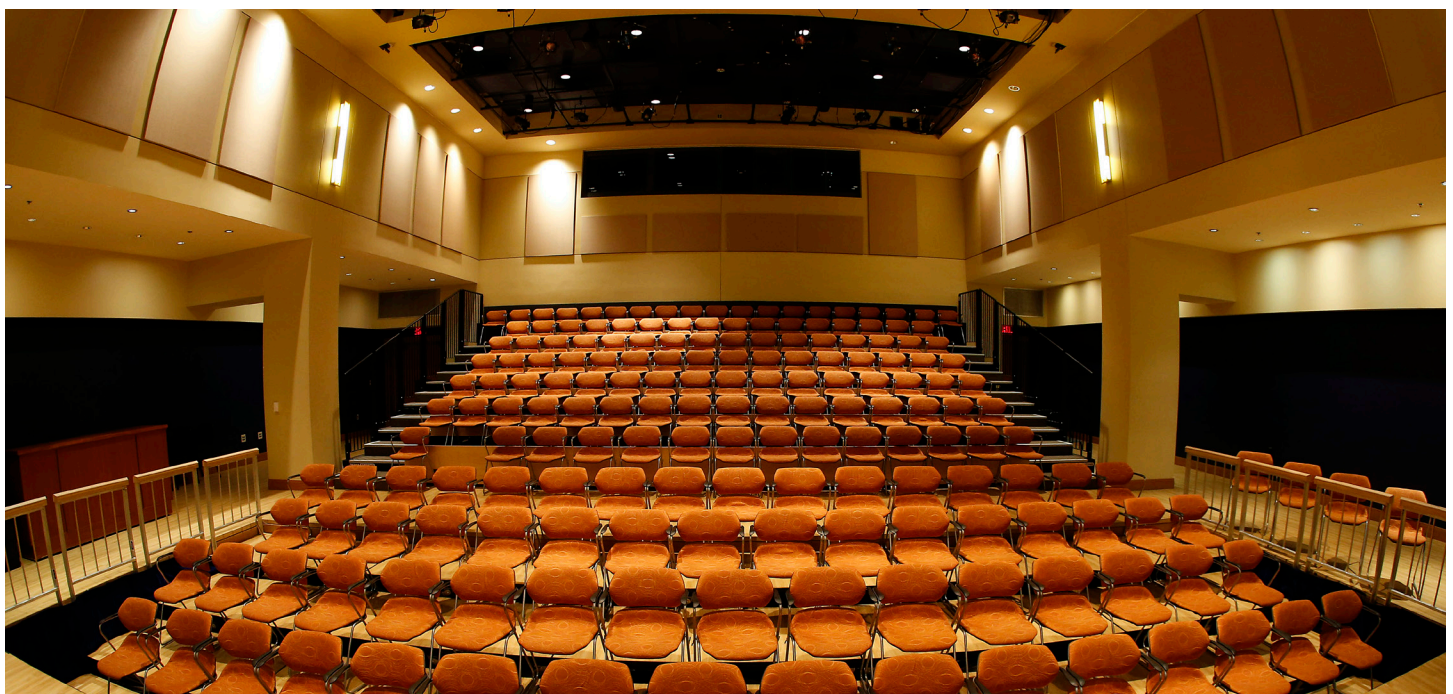
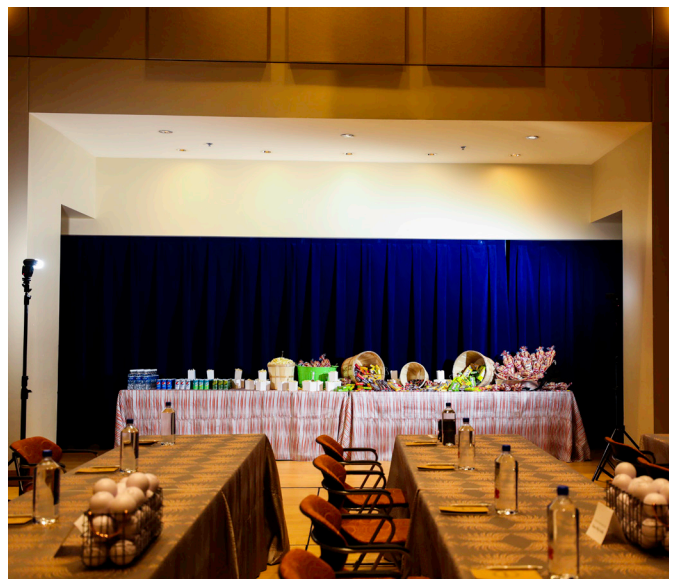
Both stair and elevator access are available to the Playhouse, located on the second floor of the venue.

Restrooms are located one floor below.

Libby S. Gottwald Playhouse Specs:

Dimensions: 3,200 sqft

Capacity: 200 seated guests



Rhythm Hall

This multi-purpose venue is located on the first floor of Dominion Energy Center, and allows for an array of activities to be held in this flexible black box space. The Showcase Gallery can be used as additional squarefootage to Rhythm Hall to accommodate larger events.

Our professional production team can accommodate your specific audio and visual needs.

All spaces on the ground floor level are ADA accessible. Elevator access is available.

Rhythm Hall Specs:

Dimensions: 2,736 sqft

Capacity: 300 standing room, 200 seated guests

Rhythm Hall Prefunction Lobby Specs:

Dimensions: 836 sqft

Capacity: 75 standing room

Showcase Gallery Specs:

Dimensions: 1,456 sqft

Capacity: 150 standing room





Lobbies & Lounges

Two lobbies and one lounge can be found in the venue, allowing for smaller gatherings, pre-show private events, or break-out spaces for larger events and meetings to take place.

Each lobby features access to a concessions area and restrooms.

The Donor's Lounge boasts private restrooms and concessions space.

Our professional production team can accommodate your specific audio and visual needs.

Both stair and elevator access are available to access each floor.

Both male and female restrooms are available on the first and second floors

Carpenter Theatre First Floor Lobby Specs:

Dimensions: 1,300 sqft

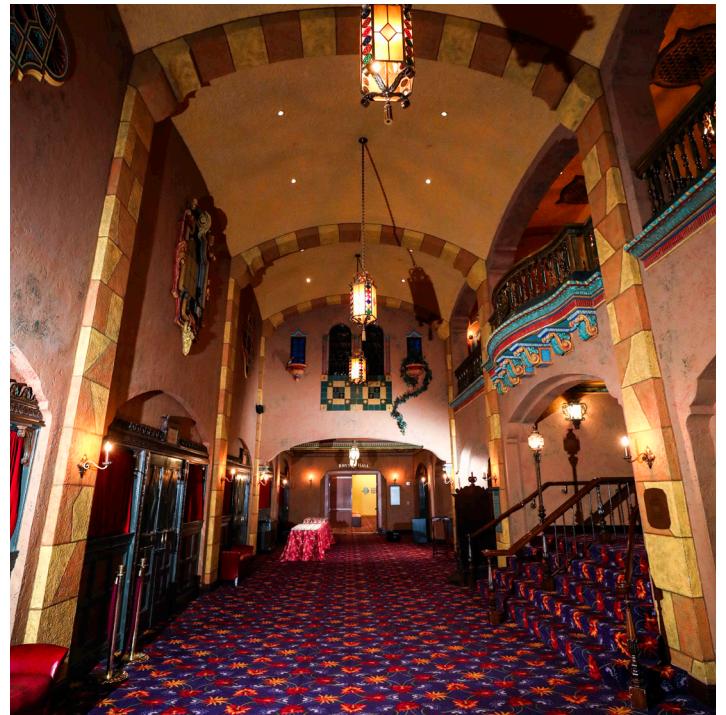
Carpenter Theatre Second Floor Lobby Specs:

Dimensions: 1,500 sqft

Donor's Lounge Specs:

Dimensions: 1,600 sqft

Capacity: 60 guests





Auxiliary Spaces

Located on the third floor of Dominion Energy Center are our auxiliary use spaces, including two classrooms and one rehearsal space.

Our professional production team can accommodate your specific audio and visual needs.

Both stair and elevator access are available to access the spaces on the third floor.

Third Floor Rehearsal Space Specs:

Dimensions: 704 sqft

Capacity: 20 guests

Third Floor Classroom Specs:

Dimensions: 391 sqft

Capacity: 20 guests

Third Floor Classroom Specs:

Dimensions: 506 sqft

Capacity: 20 guests

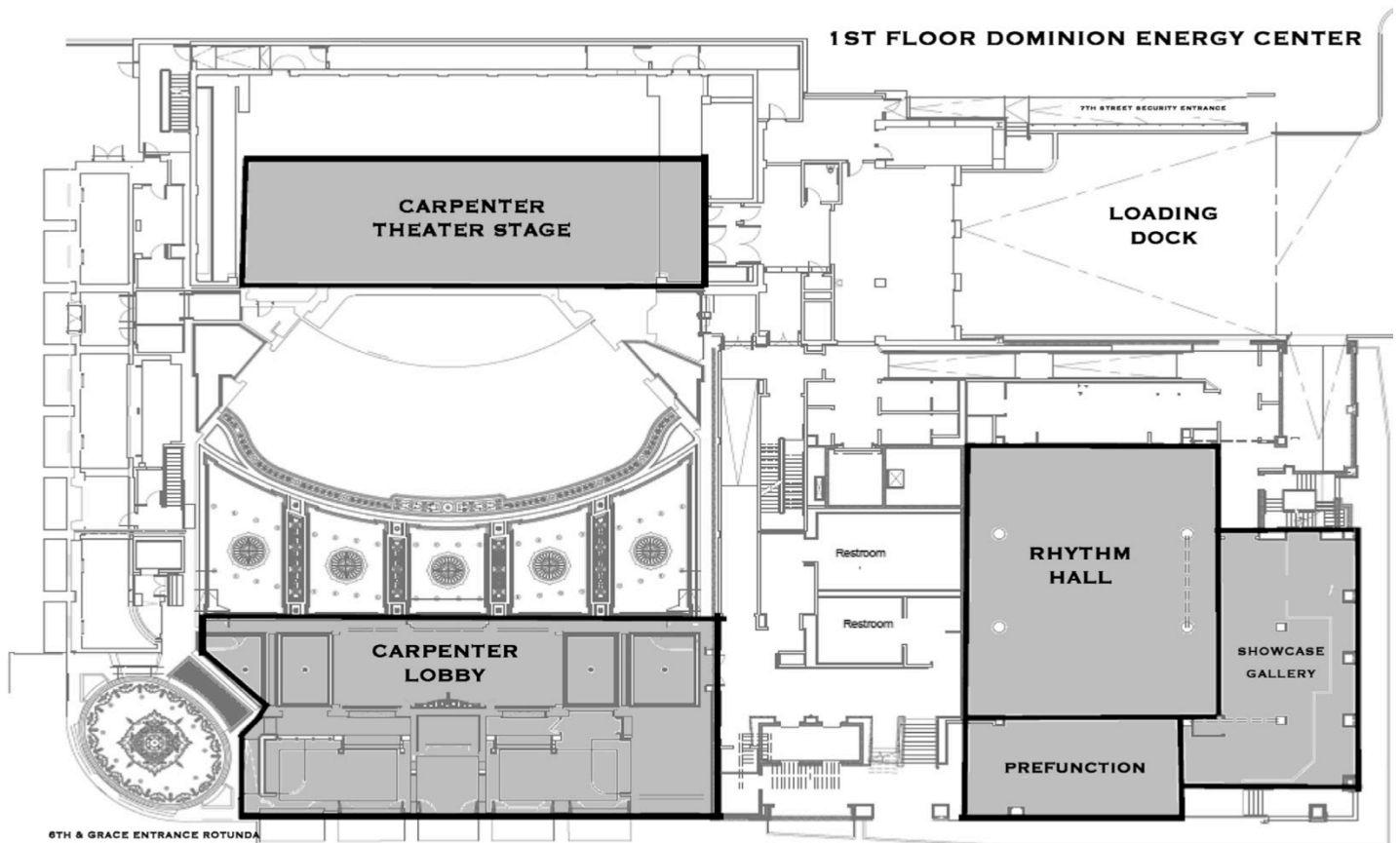


Catering our Menu for Your Needs

Let our in-house caterer, lead by our Executive Chef, whip up a menu tailored specifically to your event needs. With extensive experience catering every type of occasion in all types of venues, our food & beverage options are sure to wow your guests. From refreshments, to luncheons, hor d'oeuvres, and multi-course menus, your requests will be executed seamlessly.



Ground Level Floor Plans



Carpenter Theatre Specs:

Dimensions: Available by request
Capacity: 1,800 seated guests

Carpenter Theatre Stage Specs:

Dimensions: 4,950 sqft
Capacity: 400 standing room, 250 seated guests

Carpenter Theatre First Floor Lobby Specs:

Dimensions: 1,300 sqft

Rhythm Hall Specs:

Dimensions: 2,736 sqft
Capacity: 300 standing room, 200 seated guests

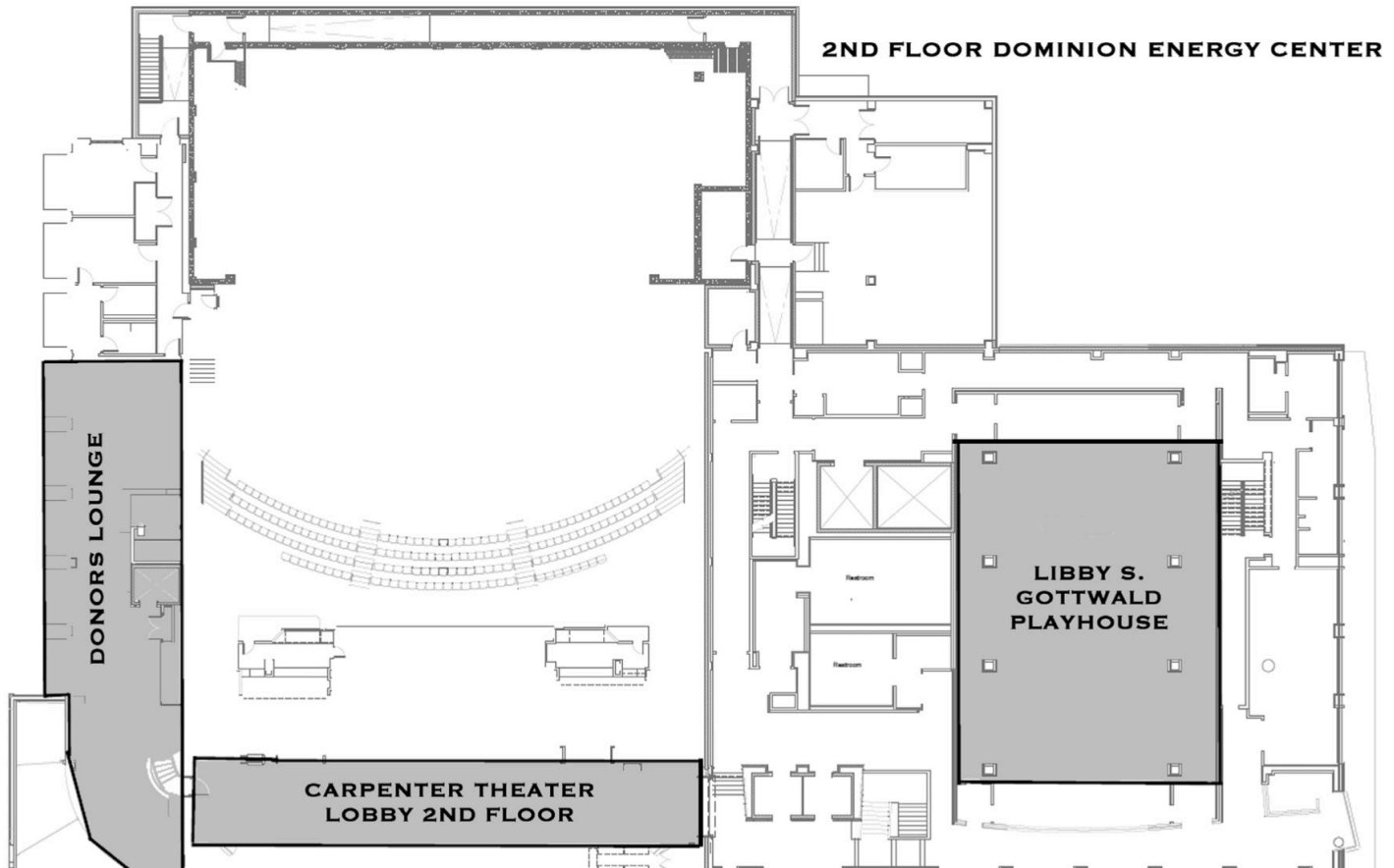
Rhythm Hall Prefunction Lobby Specs:

Dimensions: 836 sqft
Capacity: 75 standing room

Showcase Gallery Specs:

Dimensions: 1,456 sqft
Capacity: 150 standing room

Second Level Floor Plans



Libby S. Gottwald Playhouse Specs:

Dimensions: 3,200 sqft

Capacity: 200 seated guests

Carpenter Theatre Second Floor Lobby Specs:

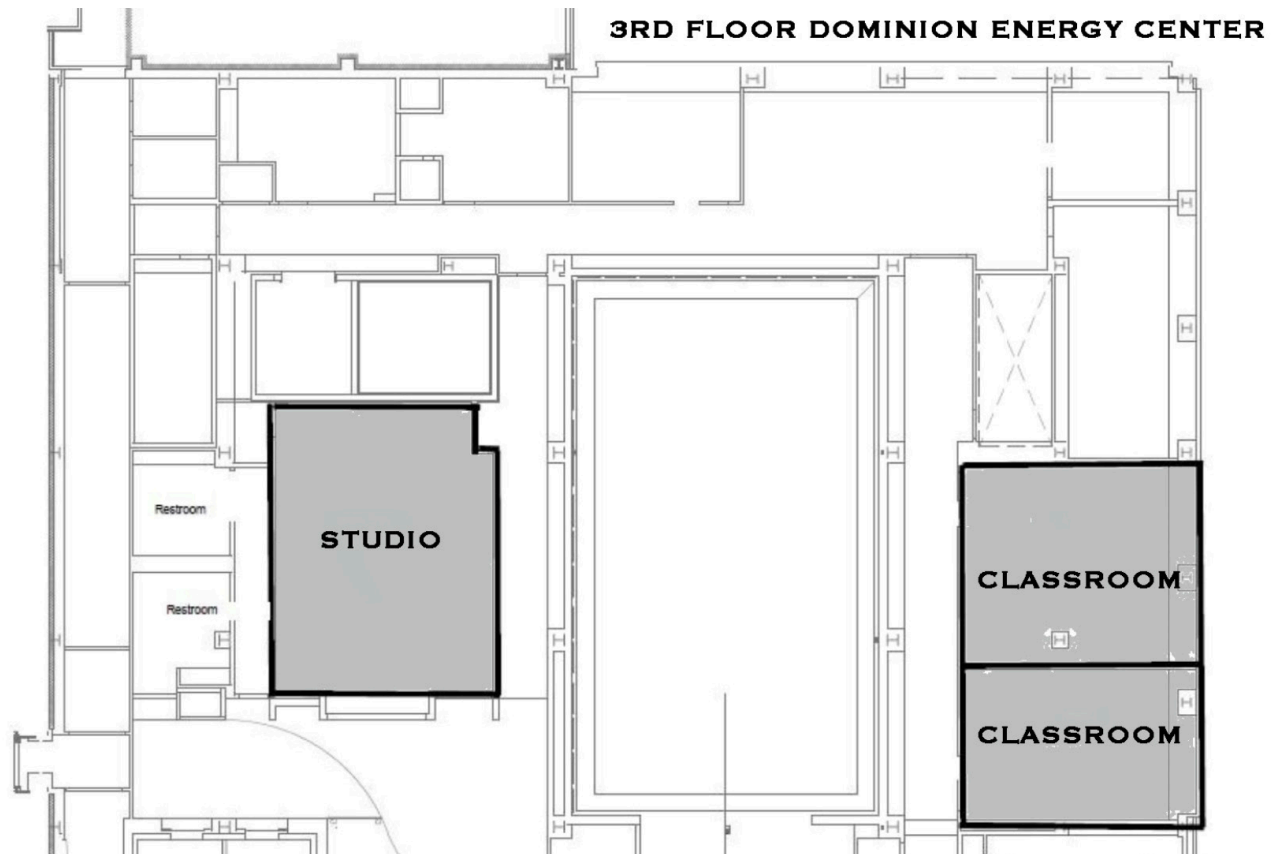
Dimensions: 1,500 sqft

Donor's Lounge Specs:

Dimensions: 1,600 sqft

Capacity: 60 guests

Third Level Floor Plans



Third Floor Rehearsal Space Specs:

Dimensions: 704 sqft

Capacity: 20 guests

Third Floor Classroom Specs:

Dimensions: 391 sqft

Capacity: 20 guests

Third Floor Classroom Specs:

Dimensions: 506 sqft

Capacity: 20 guests



Contact

Sarah Douglas
Special Events Manager
sdouglas@asmrichmond.com



DOMINION ENERGY CENTER